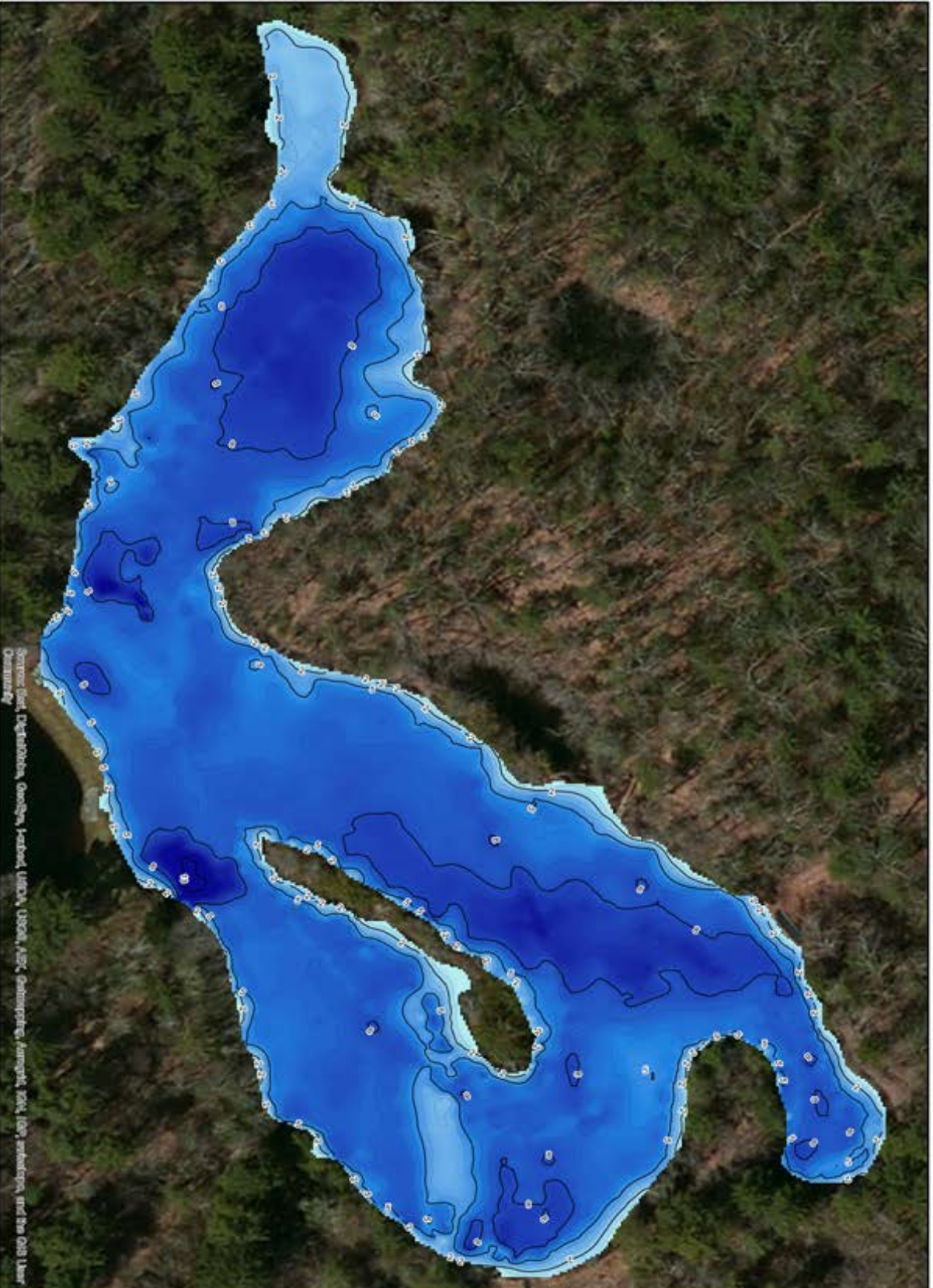


Fig 1. Harlow Pond Bathymetry



Source: Esri, DigitalGlobe, GeoEye, IGN, GeoEye, USDA, USGS, AeroGRID, IGN, Esri, AeroGRID, IGN, Esri, and the GIS User Community

Harlow Pond
Norfolk Trout Club
Norfolk, Massachusetts

Total Area: 4.6 Acres

0 37.5 75 150
 1:875 Feet

Summary Statistics*:

Site	Size (acres)	Max Depth (ft)	Average Depth (ft)	Volume (acre-ft)
Harlow Pond	4.6	13.6	6.5	32.1

*Summary statistics derived from CIBIOBASE

Note: Contour values depicted in this map are in feet. This map is not intended for navigational purposes.